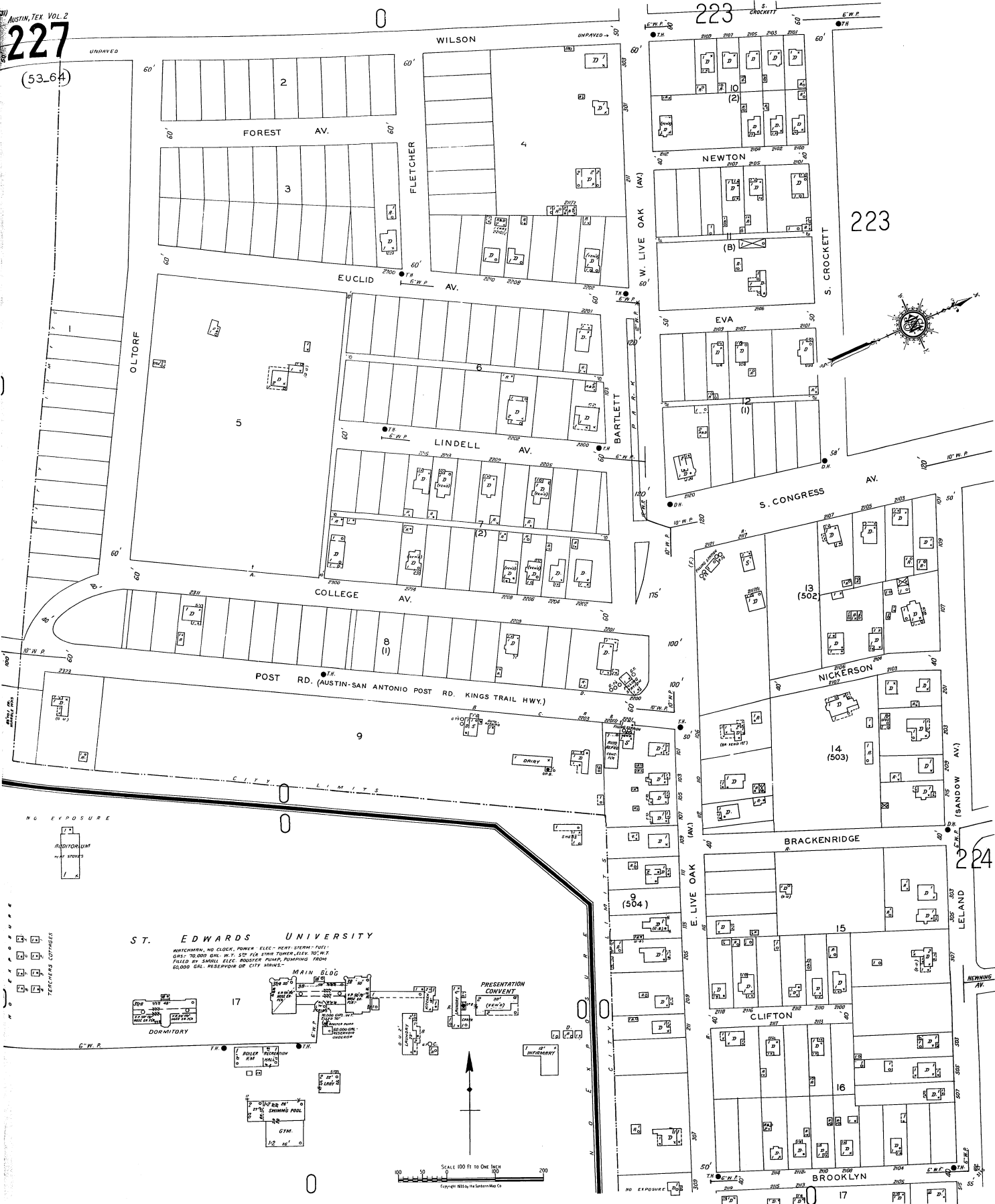
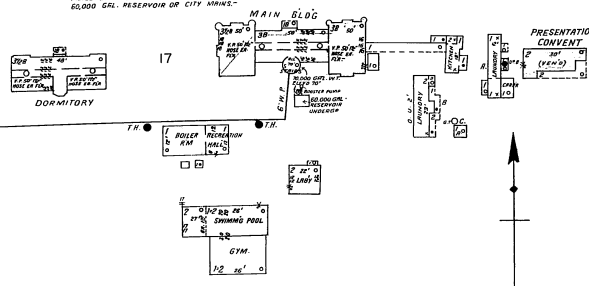


AUSTIN, TEX. VOL. 2
227
(53.64)



ST. EDWARDS UNIVERSITY

WATCHMAN, NO CLOCK, POWER, ELEC. HEAT, STERN, PUMP;
GAS - 70,000 GAL. W. C. FOR FOUR TOWER-LESS, 75' HIGH;
FUELED BY SMALL ELEC. BOOSTER PUMP, PUMPING FROM
25,000 GAL. RESERVOIR OR CITY WORKS.



SCALE 100 FT TO ONE INCH
Copyright 1935 by The Sanborn Map Co.